

/M option – Multi Measurement (MM) Mode

6500B Series Precision Impedance Analyzer 6500P Series High Frequency LCR Meter

MM Mode is a powerful firmware option on the 6500B and 6500P model ranges which allows Test Programs to be written then executed and results recorded.

Test Program

- Can be saved to and recalled from external memory
- Automatically allows multiple test steps on the Device Under Test
- Production Mode allows operators to only select and run Test Programs
- Editor Mode allows test steps to be created and configured
- Debug Mode allows test steps to be verified and validated
- Test results can be automatically logged and saved to external memory

Test Step

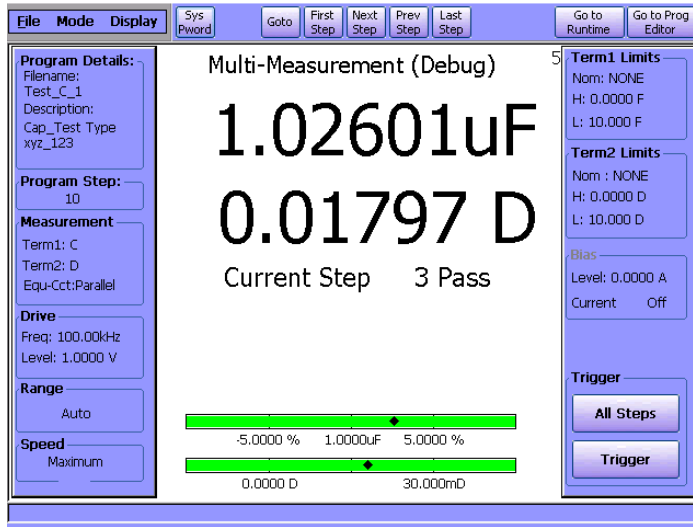
- Can have its own individual measurement conditions
- Can have its own individual test limits applied which will give a PASS/FAIL indication depending on the measured DUT values
- No limit to the number of test steps in a Test Program

Production (Runtime) Mode

Production Mode	
Multi-Measurement	
PASS	
Program Details:	Current Batch Details:
Filename: Test_C_1	Total: 200
Description: Cap_Test Type xyz_123	Pass: 199 (99.5%)
	Fail: 1 (0.5%)

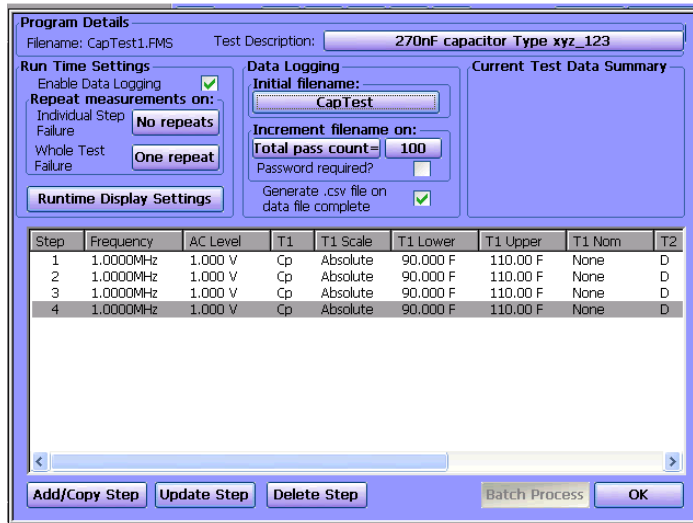
- Operator can load and run test programs
- Other modes are password protected
- Large colour coded PASS/FAIL indication on display
- Tests can be triggered without using the touch screen
- Real time statistics clearly displayed
- Simple to use

Debug Mode



- Allows test limits for each test step to be evaluated by displaying measurements on bar graph
- Limits can be quickly adjusted and assessed
- Set 'Operator' and 'Administrator' passwords
- Individual test step or multiple test steps can be triggered
- Easy to use due to large touch screen display

Editor Mode



- Add new test steps
- Set measurement conditions and limits for each test step
- Modify existing test steps
- Set 'Number of retests' on each test step
- Set Test Program file name and description
- Configure data logging routines

Test Results

- Auto logging and date stamping of all results and measurement set ups
- Auto increment facility of file names for consistent naming

Installation

This option can be installed on a unit at the time of manufacture, or by the customer after a licence has been emailed to them.